



THE MEASURE/UNDERALCOMPACT ION

High efficiency thanks to advanced inverter technology

**VITOCAL 333-G**



**Vitocal heat pumps**

Optimal use of renewable energy

A compact, floor-mounted heat pump that takes up little space and is extremely quiet - suitable for installation near living spaces.



Thanks to the advanced inverter technology, the new generation Vitocal 333-G compact ground source/water source heat pump is the most efficient solution in the new build segment.

The cooling system with power control adjusts the heating capacity of the heat pump according to the building's thermal conditions. This means fewer start and stop cycles at part load and higher annual efficiency. Vitocal 333-G is available with two power levels and a modulation range from 1.7 kW to 8.6 kW and from 2.4 kW to 11.4 kW, and will optimally meet all the heating needs of a new building.

**High efficiency - the low-energy RCD system** (Refrigerant Cycle Diagnostic System), in addition to power control, also provides ultra-precise and fast cooling system control with an electronic expansion valve. High-speed energy-saving pumps for cooling and heating systems reduce energy consumption as well as costs.

#### **High hot water efficiency and high comfort levels in living spaces**

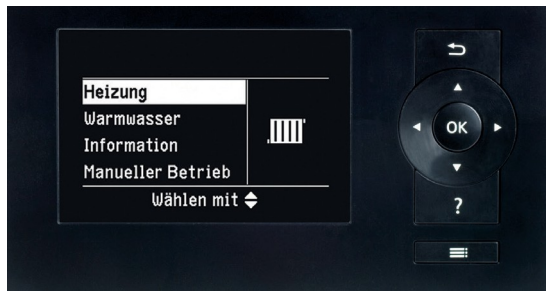
The new Vitocal 333-G 220 litre hot water tank is designed for maximum water dispensing capacity, exceeding 300 litres (discharge temperature 40 °C), energy efficiency class A+ (profile XL), and maintains a maximum temperature of 60 °C for warm drinking water without the need for electric heating. With the optional solar heat exchanger kit, a solar thermal plant can be involved in the preparation of drinking water.

The combination of the heat pump and the Vitovent ventilation system offers special comfort in the living space and in the use of the appliance. The integrated control system or the optional remote control makes it easy to control both units.

On hot summer days, a heat pump can also cool rooms. This integrated cooling function requires the optional "natural cooling" box.

## VITOCAL 333 - G

1,7 kW lid 11,4 kW



Thanks to its simple navigation options and clear menu structure, the Vitotronic control system is easy to use.

### Easy assembly, small footprint and very quiet operation

To simplify the entry and installation of the Vitocal 333-G, the new cooling system module can be easily removed from the heat pump and moved separately if necessary (thanks to hydraulic and electrical plug-ins). In addition, the heat pump's flexible connection concept allows the pump to be quickly adapted to the situation on site.

The small installation space of less than 0.5 m<sup>2</sup> and front access to all components requiring maintenance allow the heat pump to be installed even in small spaces. The very low operating noise of 41 dB(A) (sound power according to ErP with B0/ W55) allows the compact unit to be installed also close to living areas, e.g. in the utility room of a house.

### VITOCAL 333-G PÄRLICING

- + Almost inaudible operating noise and an innovative noise reduction concept allow the heat pump to be installed close to living spaces.
- + The compact dimensions and small installation area save space in the building.
- + High level of user comfort - heating, cooling, hot water and ventilation control with the integrated Vitotronic control system.
- + Increased use of self-generated electricity from photovoltaic modules

is provided by the heat pump's low power modulation.

- + Connect to the internet via Vitoconnect (accessory) with the ViCare app.
- + Vitovent compatible apartment ventilation systems management

### Online adjustment with the ViCare app

By connecting to the optional Vitoconnect web interface, the heat pump can be controlled online with the free ViCare app installed on any of the most popular terminal units.

The heat pump itself is equipped with the intuitive and menu-style control system Vitotronic 200 with open text display and graphic display.



Energy label Vitocal 333-G (BWT 331.C12)

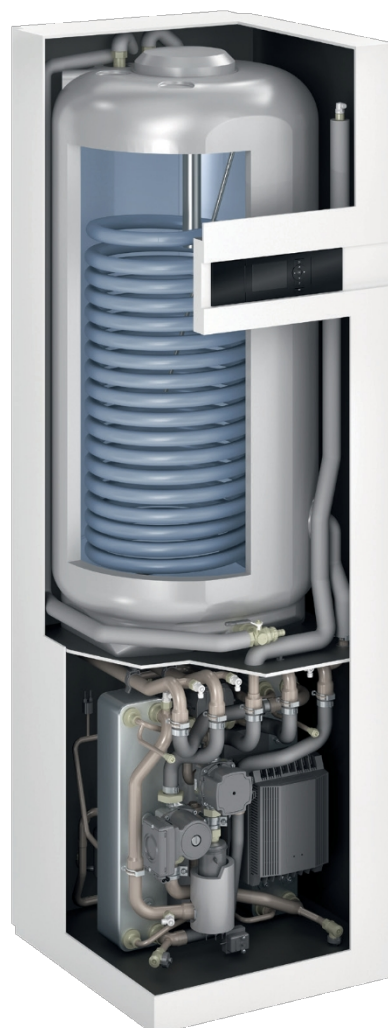
Vitocal 333-G (BWT 331.C12)  
Energy efficiency class  
A+++ according EU  
Regulation 813/2013.  
The new energy efficiency class  
A+++ came into force in 2019  
26 September.





Vitocal 333-G has  
been awarded the  
KEYMARK quality  
certificate.

### VITOCAL 333-G

- 1 Control system Vitotronic 200 (type WO1C)
- 2 Hot water storage  
steel tank, Ceraprotect  
enamel-coated, capacity 220  
litres
- 3 Hydraulic plug connections
- 4 Capacitor
- 5 Primary pump and secondary  
pump (high-efficiency  
circulator  
pumps)  
"Scroll compressor with power  
control
- 6
- 7 Hot water instantaneous  
heater



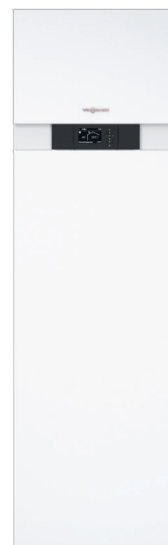
## Ground source/water source heat pump compact unit **VITOCAL 333-G**

Vitocal 333-G	Tips	BWT 331.C06	BWT 331.C12
<b>Power data</b> (according to EN 14511, B0/ W35, temperature difference 5 K)	kW	4,3	5,3
<b>Nominal thermal capacity modulation range</b>	kW	1,7-8,6	2,4-11,4
<b>Coefficient of performance<sub>i</sub> (COP) in heating mode</b>		4,7	4,8
<b>Maximum starting temperature</b>	°C	65	65
<b>Coolant for cooling system</b>			
		R410A	R410A
- Refilling quantity	kg	2,0	2,3
- Greenhouse gas potential GWP)*		1924	1924
- CO <sub>2</sub> equivalent	t	3,9	4,4
<b>Dimensions</b> (length (depth) x width x height)	mm	680 x 600 x 2000	
<b>Tank capacity</b>	Litres	220	220
<b>Maximum water discharge volume</b> with a discharge temperature of 40 °C	Litres	306	306
<b>Coefficient of performance<sub>i</sub> (COP<sub>wh</sub>)</b> for hot water		3,2	3,2
<b>Weight</b>	kg	277	282
<b>Energy efficiency class**</b>		A+++ / A++	A+++ / A+++
<b>Drinking water preparation:</b> distribution profile Energy efficiency class		XL A+	XL A+

\* Based on the IPCC 5th report

\*\* Energy efficiency class according to EU Regulation 813/2013 Heating, average climate - for use in the low temperature range (W35) / for use in the medium temperature range (W55)

The new energy efficiency class A+++ came into force on 26 September 2019.



### PRODUCTION OF THE COUNTRY

- + Ground source/water source heat pump combination units with inverter technology, from 1,7 kW to 11,4 kW (modulating)
- + Very high warm water comfort level with warm drinking water temperatures up to ° and a high dispensing capacity of 300 litres from a 220 litre hot water tank
- + Very low running costs due to optimised hot water efficiency - energy efficiency class A+
- + Warm drinking water up to 60 °C, without electric heating
- + Low running costs are determined by the optimised Seasonal Coefficient of Performance (SCOP= Seasonal Coefficient of Performance) according to EN 14825: up to 5.5 (cold climate/low temperature use)
- + COP value (coefficient of performance) according to EN 14511 (5/2018): up to 4.8 (B0/ W35)

Your specialised partner

9449 992 - 8 EN 03.2019

Content protected by .

Reproduction and any other use only by prior agreement. Subject to change.